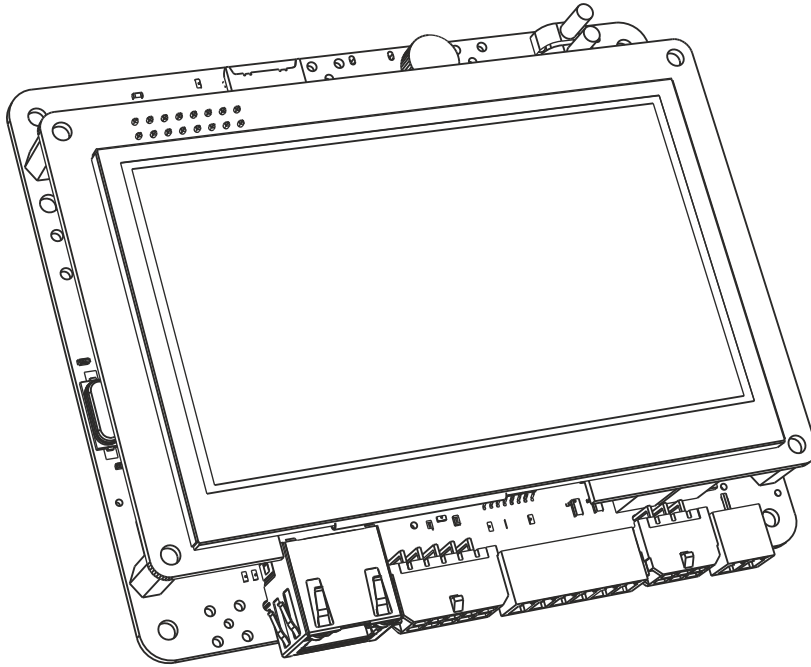


# MCR08-GH contactless MIFARE® card reader



## Description

MCR08-GH is a programmable OEM RFID & HMI & Telemetry terminal designed for using Automation, RFID projects and Telemetry&IoT applications. Device supports a number of communication technologies such as GPRS/NB-IoT/Wi-Fi/Bluetooth thanks to the miniPCIe expansion slot and on board ethernet. MCR08-GH has an outstanding performance especially at RFID-HMI operator panel applications.

## Specifications

- 4.3" TFT Capacitive/Resistive Touchscreen
- 13.56 MHz Contactless NFC/RFID Reader
- Ethernet and GPRS/2G/3G/LTE or Wi-Fi & Bluetooth
- RS232/RS485 ModBus & Internal Relay & Digital Inputs
- PoE \*(Requires additional hardware)
- Online/Offline Operation
- Easy configuration and control over local network
- SDK for system and device integrators

## Applications

- RFID & HMI Operator Panel
- Factory & Machine Automation & Process Control
- Smart Home & Building Automation
- Electrical Vehicle Charging Stations
- Vending Machines & Kiosks
- Access / Attendance Control
- Inventory Tracking & Object Detection (ICODE etc.)
- IoT Gateway & Indoor Monitoring & Tracking
- Telemetry Monitoring & Status Screen

# MCR08-GH contactless MIFARE® card reader

## Technical Specifications

### Contactless Reader

- ISO14443A/B Standard
- MIFARE® Classic, DESFire/Plus and Ultralight Contactless Read / Write
- ISO/IEC 15693\* Support
- ISO/IEC 18000\* (ICODE®) Support
- 50Ω External RFID Antenna Connection

### Display

- 4.3" TFT Capacitive / Resistive Touchscreen

### CPU

- 32-bits ARM Cortex 200 MHz CPU

### Memory

- 8 GB Internal microSD Memory
- 1 MB Internal NOR Flash Memory
- 256 KB FRAM\*

### Communication

- Ethernet 10/100 Mbps
- Integrated TCP/IP ( UDP,ICMP, FTP, NTP, Ping ) Software Stack
- Internal GSM/GPRS 2G/3G/LTE/NB-IoT miniPCIe Modem\*
- Internal Wi-Fi IEEE 802.11 b/g/n / Bluetooth BLE 4.2 miniPCIe Modem\*
- RS232 Port (300-115200 Baud)
- RS485 Port (300-115200 Baud)
- USB 2.0 (VCOM, HID)

### I/O

- 2x Relay Outputs (1.5A Max.)
- 4x Opto-Isolated Digital Inputs

### Other Features

- Offline Operation Mode
- RTC (Real Time Clock) with Battery Back-up
- Real Audio Output (Internal Amplifier and Speaker)
- 2x LED Indicators
- Buzzer

### Power

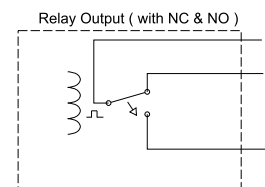
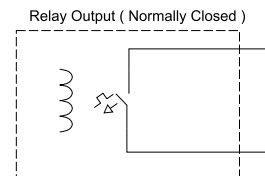
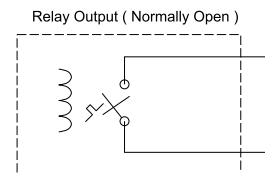
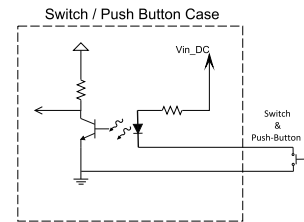
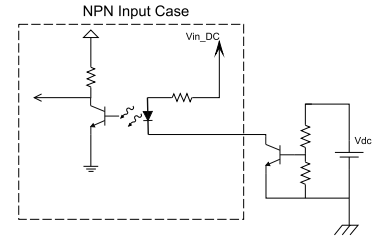
- 6-60V DC Operation Voltage
- IEEE 802.3af PoE\*

### Environmental Specs.

- -20°C ... +70°C Industrial Operating Range
- -30°C ... +80°C Storage Temperature Range

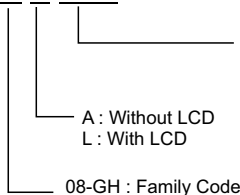
\* = Optional

## Input / Output Schematics



## Ordering Information

### MCRXX X-XXX-OEM

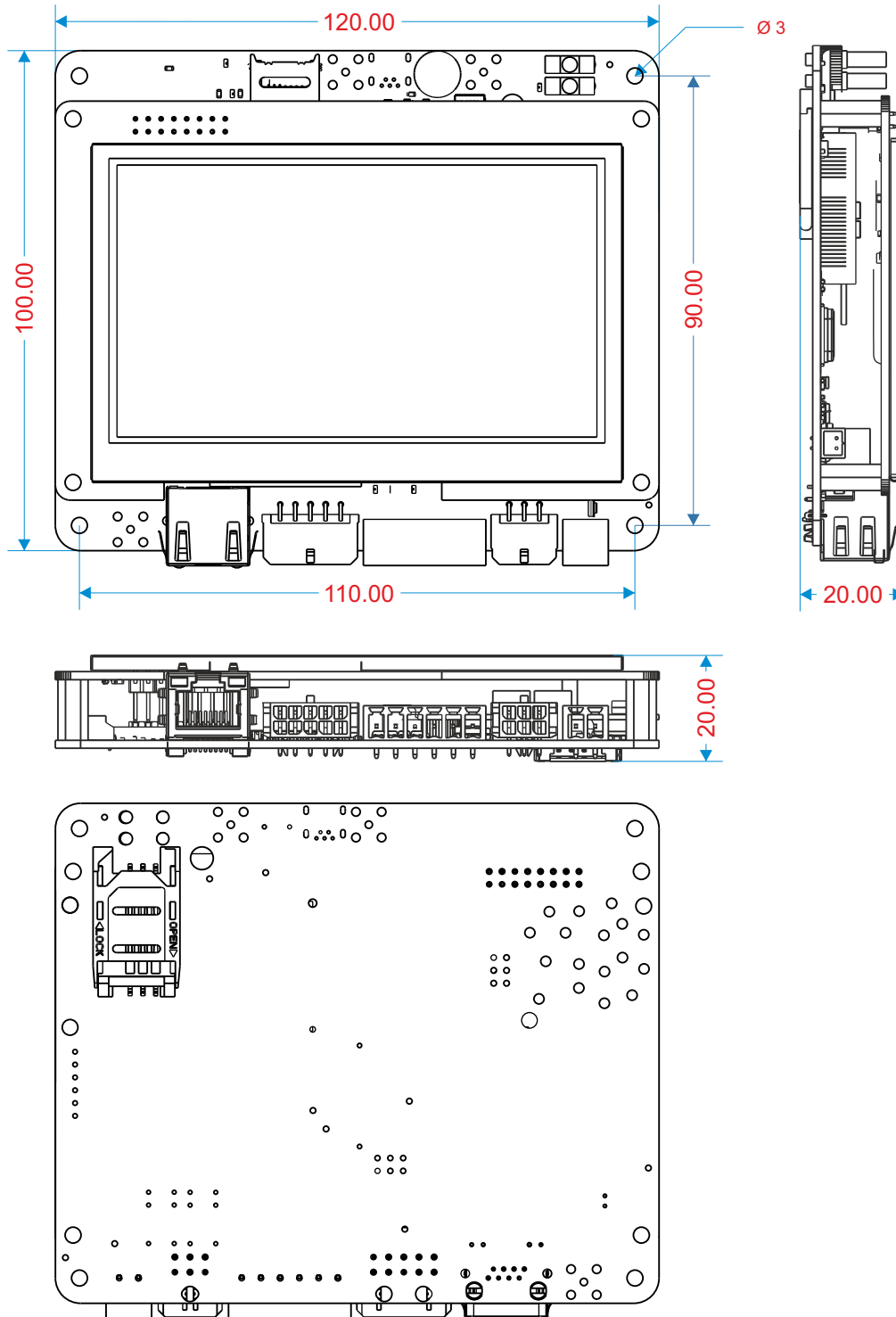


- U : USB Port
- E : Ethernet Port
- R3 : RS232 Port
- R4 : RS485 Port
- RL : Relay (2 for dual Relay)



# MCR08-GH contactless MIFARE® card reader

## Dimensions (mm)



All dimensions are in mm.